

Direct Links
to Canvas



Available on-line in your  canvas folder at <http://canvas.umn.edu/>

[r2023 Canvas Modules](#)

[r2023 Module Week 14](#)

[r2023 AF Simple Syllabus](#) .pdf



Tim Roufs Inspecting Durians in Singapore Market, 2017

Anthropology of Food Week 14

1.0 **What's Happening?**

5.0 **Other Assignments**

9.0 (optional)
For Fun Trivia

(optional)
Live Chat
Tuesday 7:00-8:00 p.m.

2.0 **Video Explorations**

*6.0 **Final Exam**

10.0 (optional)
Extra Credit

(optional)
Questions / Comments

3.0 **Slides**

*7.0 **Project**

11.0 (optional)
Other

4.0 **Readings**
[Semester Readings](#)

*8.0 **Discussion**

click links for details)
= leave page

Items DUE this week:
*enter on-line
**upload file

1.0 What's Happening Week 14?

Something's fishy this week. And this week we'll see how, in our discussion on American Indian and Alaskan Native fishing and whaling rights, and in our For Fun Food Trivia.

And it's time to see the fruits of your research labors, and to see what you have in store for the final exam.

Your Term Paper and your Question for the Final Exam are due this week.

As always Live Chat is at 7:00 p.m. on Tuesday, a handy time to ask questions about your Term Paper and the Final Exam. But if that time is not convenient, e-mail. . . .

2.0 VIDEO EXPLORATIONS WEEK 14 . . .

Real People . . . Real Places . . .
[Videos for the Semester](#)

No new videos this week. Review Videos for Final Exam.

3.0 WEEK 14 SLIDES . . .

[Class Slides for the Semester](#)

Review the Following Slide Decks

using the "slide show" mode:

(Yes, one more time before the Final Exam)

Ask yourself, "How do these characteristics relate to my Term Paper and Presentation?"

[\(WebSite with Links\)](#)

[click ↑ here]

Main Characteristics of Anthropology

[WebPage Summary](#)

week 2: **1 The four fields of anthropology** ([.pptx](#))

week 3: **2 culture** as a primary concept ([.pptx](#))

- How about a little game of Jeopardy? ([.pptx](#))

week 3: **3 comparative method** as major approach ([.pptx](#))

week 6: **4 holism** as a primary theoretical goal ([.pptx](#))

- Anthropology and its **Parts Chart** ([.pptx](#))
 - Enlarged Chart: ["Anthropology and . . . It's Parts"](#)

week 6: **5 fieldwork** as a primary research technique ([.pptx](#))

week 10: **"Other Important Terms"** ([.pptx](#))

week 11: **Units of Analysis** ([.pptx](#))

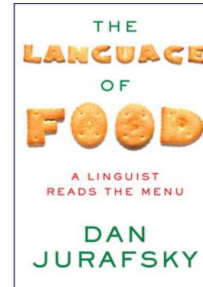
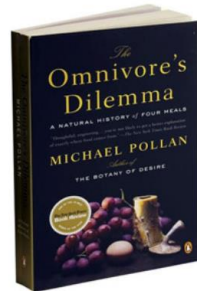
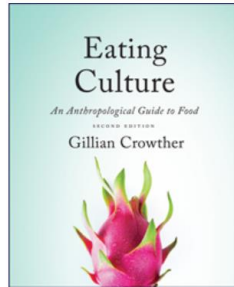
week 12: **Three Major Perennial Debates** ([.pptx](#))

(NOTE: These are long slide decks as they cover more than 2000+ years. Please bear with it to the end. And it will take a little longer to load, so please bear with that also. Also see note on slide formats.)

4.0 READINGS FOR WEEK 14 . . .

[Readings for the Semester](#)

[Textbook Information](#)



- **Eating Culture, Second Edition, Gillian Crowther**

- (Review)

- **Omnivore's Dilemma, Michael Pollan**

- Ch. 12, "Slaughter: in a glass abattoir"
 - Ch. 13, "The market: 'greetings from non-barcode people'"
 - Ch. 14, "The meal: grass-fed"

- **The Language of Food, Dan Jurafsky**

- (Review)

5.0 OTHER ASSIGNMENT INFORMATION . . .

[Main Due Dates](#)

f2023 **Module 14 – Week 14**

REM: Course Survey
(from ITSS)



The friendly folks from the UM Office of Measurement Services will be sending you an Invitation and Reminder to Participate in an online Course Evaluation.

Evaluations are important to me, the Department Head, and the Dean, as well as everyone in our Department.

Please fill out the online Student Rating of Teaching (SRT) carefully.

Evaluations are anonymous and will not be seen by the instructor until final grades for this course have been recorded, and then only aggregate information from the entire class will be passed onto the faculty member.

Your input will help improve this course.

Thanks,

Tim Roufs

For assistance: eval@umn.edu or 1-HELP

For SRT information: <http://oms.umn.edu/srt>

Office of Measurement Services, 879 29th Ave SE, Minneapolis, MN 55414 [privacy statement](#)

DUE: 6.0 FINAL EXAM INFORMATION . . .

[Basic Information](#)

[Final Exam Information](#)

DUE: FINAL EXAM Question . . .

End of Week 14, Sunday, 3 December 2023

DUE: AF SUBMIT Final Exam Question

(after annotation these will be your STUDY QUESTIONS)

<https://canvas.umn.edu/courses/381762/modules/items/10011801>

[click ↑ here]

DUE: 7.0 PROJECT INFORMATION . . .

[Basic Information](#)

[Main Due Dates](#)

Student Presentations

(Review 3-5)

DUE: **Your Term Paper**

Saturday, 2 December 2023

DUE: ***Term Paper* DROPBOX** (Project Part 4)
[f2023 <https://canvas.umn.edu/courses/381762/assignments/3160504>](https://canvas.umn.edu/courses/381762/assignments/3160504)

[click ↑ here]

REM: AF Check the **UNITS OF ANALYSIS** (.pptx) that you are using for Your Project--
compare them to the Units of Analysis described in the slides deck

[f2023 <https://www.d.umn.edu/cla/faculty/troufs/anthfood/afslides_f2023.html#Week11>](https://www.d.umn.edu/cla/faculty/troufs/anthfood/afslides_f2023.html#Week11)

[click ↑ here]

^{s2023} REM: AF Does your Project take a **HOLISTIC VIEW** of your Subject? If You Need to . . .
Review Holism (.pptx)

[f2023 <https://www.d.umn.edu/cla/faculty/troufs/anthfood/afslides_f2023.html#Week06>](https://www.d.umn.edu/cla/faculty/troufs/anthfood/afslides_f2023.html#Week06)

[click ↑ here]

^{s2023} REM: AF Check Your Project. How does your Project incorporate the
"FOUR FIELD" APPROACH?

[f2023 <https://www.d.umn.edu/cla/faculty/troufs/anthfood/afslides_f2023.html#Week02>](https://www.d.umn.edu/cla/faculty/troufs/anthfood/afslides_f2023.html#Week02)

[click ↑ here]



Charles Dickens (1842)
Francis Alexander (1800-1880)
[Wikipedia](#)

Details are at . . .

[<https://www.d.umn.edu/cla/faculty/troufs/anthfood/afterm_paper.html#title>](https://www.d.umn.edu/cla/faculty/troufs/anthfood/afterm_paper.html#title)

[click ↑ here]

As I mentioned last week and throughout the semester a major part of this course is your **research project**—not just for the points, but because researching a topic you are interested in, and presenting your findings to others, and then writing the results up as a formal paper, is one of the best ways to learn things, *and* it gives you valuable practice for presenting your ideas and arguments.

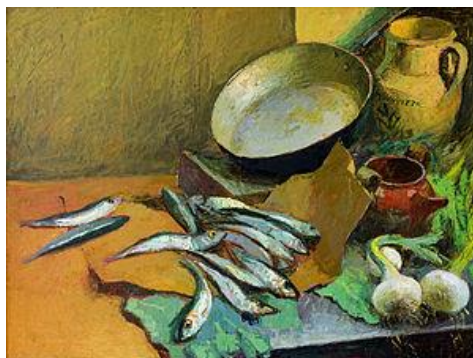
8.0 DUE: DISCUSSION WEEK 14 . . .

(optional) [Online Discussions Information, Rubric, and Sample Posts](#)

American Indian Fishing and Whaling Rights, and Inuit Seal-Trading Rights

9.0 (optional) For Fun Food Trivia for the Week . . .

“How many pounds of anchovies
does it take to produce one pound of fish-farmed salmon?”



[Answer](#)

10.0 (optional) EXTRA CREDIT . . .

[Basic Extra Credit Information](#)

If you have any questions about Extra Credit, e-mail troufs@d.umn.edu

Optional Extra Credits were Due Last Week

The Grind
Case Study
Lecture/Video/Event Review

11.0 OTHER (OPTIONAL) . . .

(optional) **LIVE CHAT: OPEN FORUM / OFFICE HOURS . . .**

[Contact Information](#)

Tuesday, @ 7:00-8:00 p.m. (CDT)

“ZOOM”

[click ↑ here]

or

e-mail anytime: <mailto:troufs@d.umn.edu>

[click ↑ here]



Live Chat is optional.

QUESTIONS? / COMMENTS . . .

If you have any **questions or comments** right now, please do not hesitate to post them on the  canvas “Discussions”, or e-mail troufs@d.umn.edu, or ZOOM <https://umn.zoom.us/my/troufs>. (E-mail is fastest, and most generally best as quite often URLs need be sent.)

Best Wishes,

Tim Roufs

<<http://www.d.umn.edu/~troufs/>>

<<https://umn.zoom.us/my/troufs>>

<other contact information>